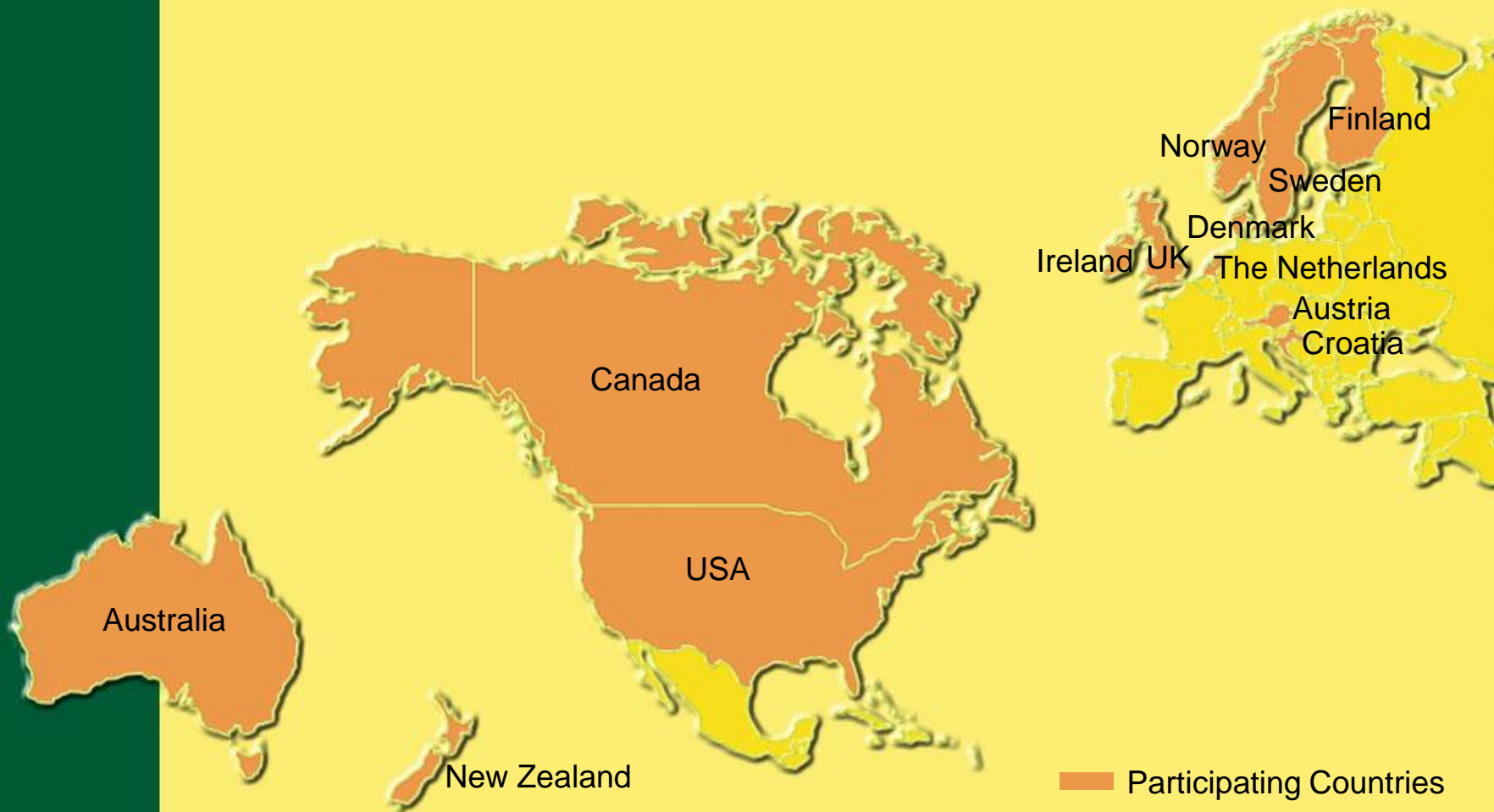


# IEA Bioenergy Task 38

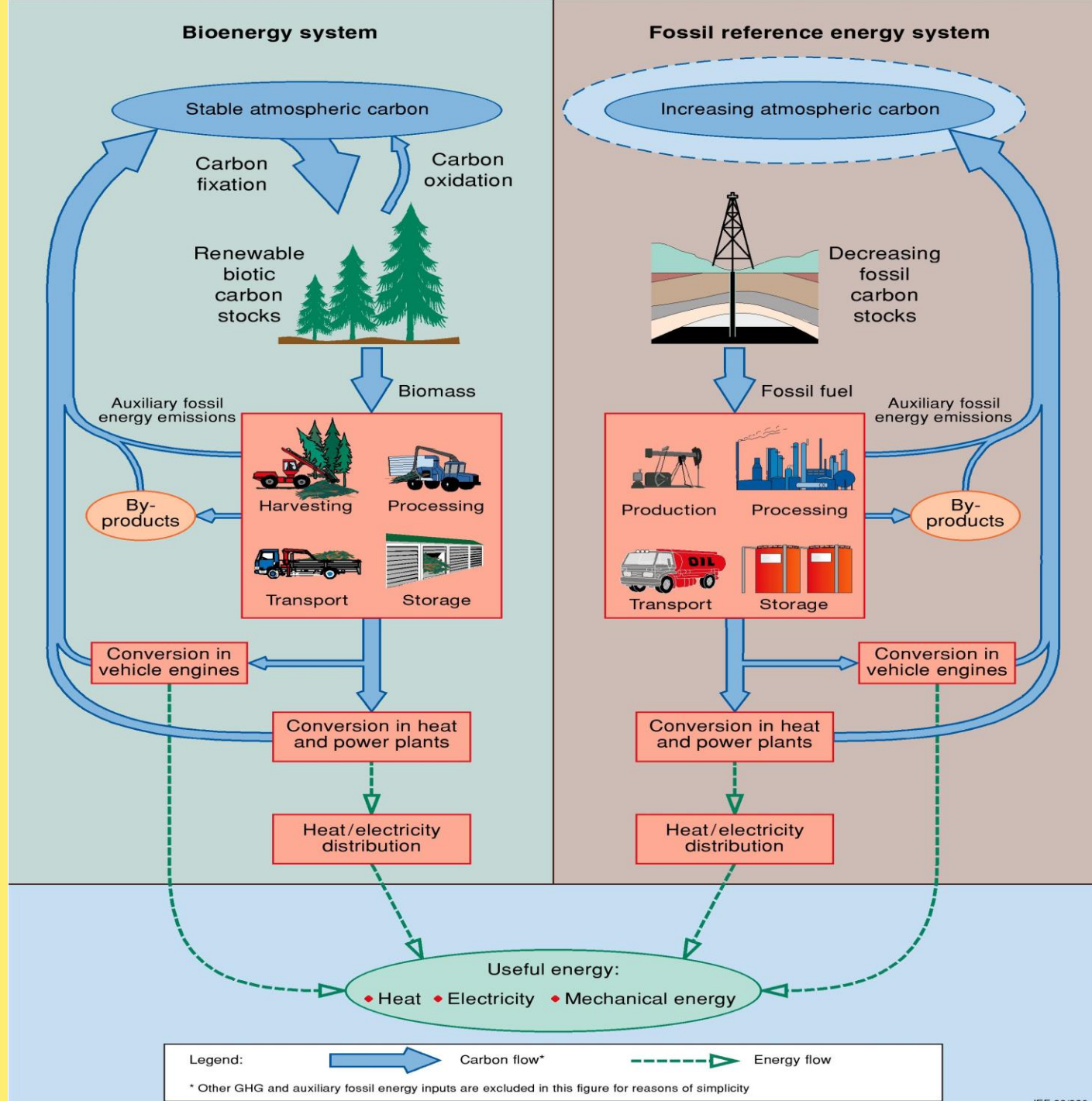
Kimberly Robertson



## Task Aims

---

- **Promote international exchange of ideas, models and science**
- **Address policy relevant issues**
- **Address methodological issues**
- **Conduct case studies**
- **GHG balance modelling**
- **Address controversial issues and develop joint technical statements**



# Case Studies

---

- **Apply the ‘standard methodology’ to actual bioenergy and/or C sequestration projects**
- **Assess and compare GHG balances of different projects**
- **Compare to fossil energy systems**
- **Recommendations for optimizations**
- **8 in participating countries**

# IEA Bioenergy Task 38

Task 38

## Greenhouse Gas Balances of Biomass and Bioenergy Systems

[www.joanneum.at/iea-bioenergy-task38](http://www.joanneum.at/iea-bioenergy-task38)

